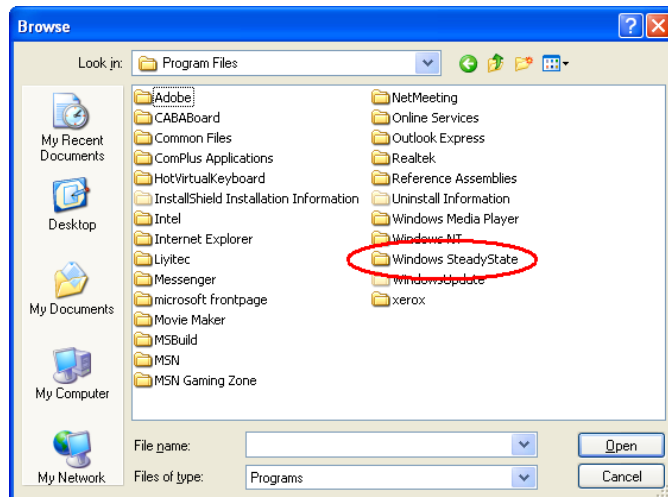


How to change scrollbar width on TM1700 running on Windows XP Professional

1. Check if Windows Steady State is installed and activated

- a. Press Ctrl+Alt+Del to start the task manager and select the Applications tab
- b. Press New Task and then the Browse button
- c. Browse to C:\Program Files and check if there is a folder named "Windows Steady State"

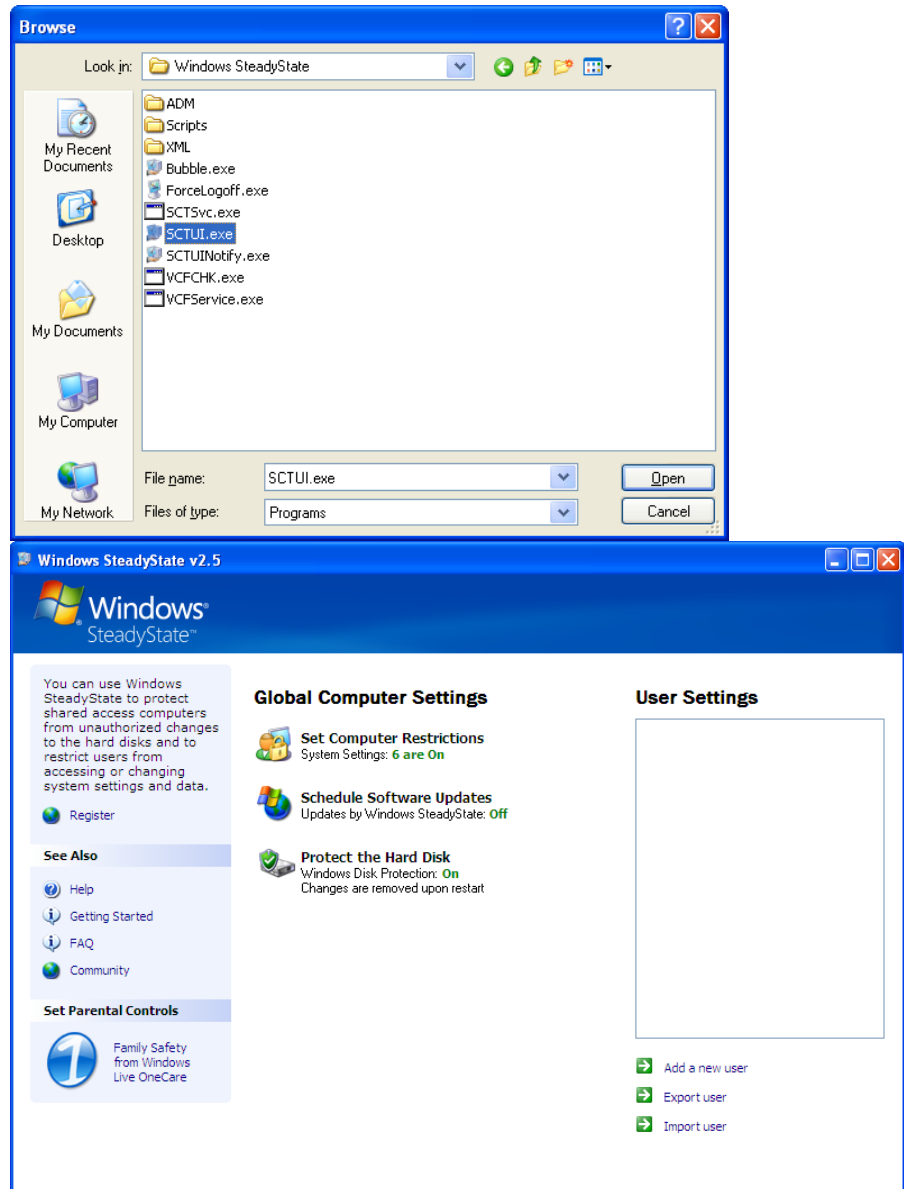


- d. If the folder "Windows Steady State" exists, please jump to section 2 below
- e. If the folder "Windows Steady State" is not found, Windows Steady State is not installed on the unit. Please click Cancel in two dialogues and then close the Task Manager. After this you can proceed directly to section 3 below.

How to change scrollbar width on TM1700 running on Windows XP Professional

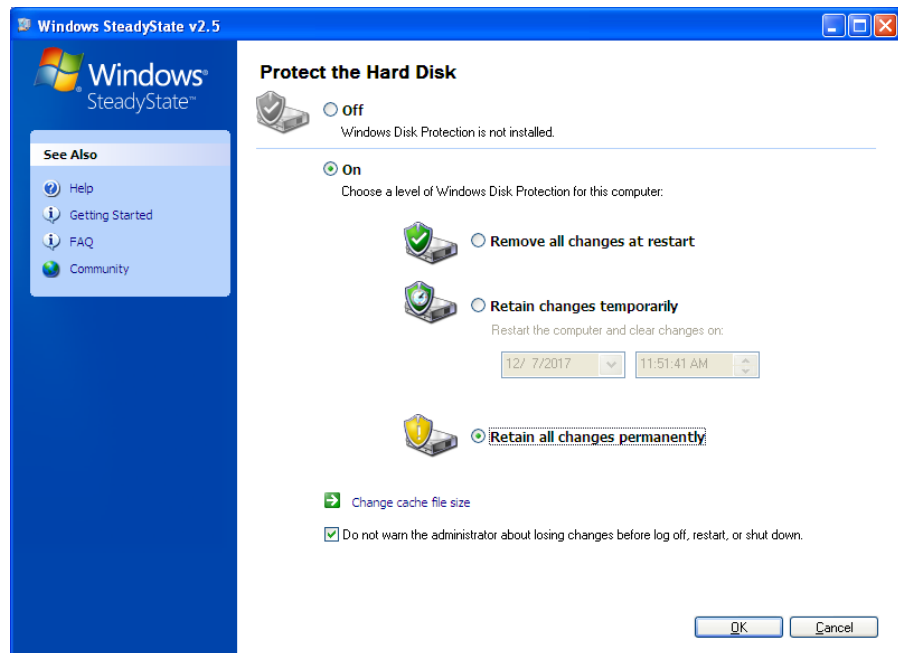
2. Deactivate Windows Steady State temporarily during change of scrollbar width

- a. Open the folder "Windows Steady State"
- b. Mark the file "SCTUI.exe" and press Open and then OK in the next dialogue



- c. Click "Protect the Hard Disk" and then select the option "Retain all changes permanently"

How to change scrollbar width on TM1700 running on Windows XP Professional



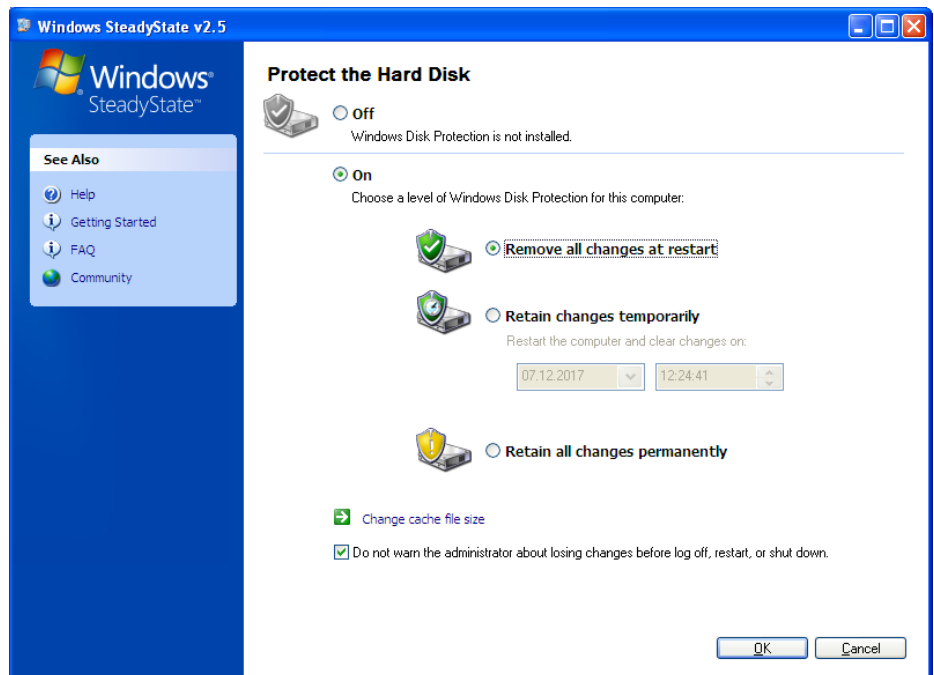
3. Change scroll bar width

- a. If applicable, close the Windows Steady State user interface by clicking on the X in upper right corner
- b. In the Task manager, click "New task", type "explorer" in the field and click "OK"
- c. Right-click on "Desktop" and select "Properties"
- d. Click the "Appearance" tab and then the "Advanced" button
- e. Click on the scrollbar to the right in the dialogue. "Item" now displays "Scrollbar"
- f. Change the "Size" to "22" or another value that you find suitable
- g. Click "OK" and then "OK" again in the next dialogue
- h. Check the scrollbar width in CABA Local
- i. **IMPORTANT:** If Windows Steady State is installed, **you need to restart the unit now** and then proceed with step 4 below
- j. If windows Steady State is not installed, the change is now completed. (Step 4 shall be ignored in this case)

4. Activate Windows Steady State again (Only applicable if Windows Steady State is installed)

- a. Press Ctrl+Alt+Del to start the task manager and select the Applications tab
- b. Press the New Task button. The path to the file "SCTUI.exe" should already be present in the "Create New Task dialogue. Just click OK button
- c. Click "Protect the Hard Disk" and then select the option "Remove all changes at restart" and then press the OK button

How to change scrollbar width on TM1700 running on Windows XP Professional



- d. Close the Windows Steady State user interface by clicking on the X in upper right corner
- e. Close the Task manager
- f. The change is now completed