



# **Megger PAT Upgrader Rev. 1.7**

## **User Manual**

**Megger Instruments Limited. Archcliffe Road, Dover, Kent CT17 9EN, England.**

**T +44 (0) 1304 502 100**  
**F +44 (0) 1304 241 491**  
**E [uksales@megger.com](mailto:uksales@megger.com)**  
**[www.megger.com](http://www.megger.com)**

Registered to ISO 9001:2008 Certificate No. Q09250 Registered to ISO 14001:2004 Reg no. EMS 61597

Registered No. 190137

**Contents**

Contents.....2

Disclaimer .....3

Introduction .....3

PAT USB Driver .....3

Installing PAT Upgrader .....5

To Perform software Upgrade .....5

Download Test Database .....12

Upload Test Database.....14

Revision History .....15

## Disclaimer

Megger Instruments Limited accepts no liability for the content of this document, or for the consequences of any actions taken on the basis of the information provided. If you are not the intended recipient you are notified that disclosing, copying, distributing or taking any action on the contents of this document is strictly prohibited.

## Introduction

Use *PAT Upgrader* to perform software upgrades on Megger Portable Appliance Testers PAT300 and PAT400 series instruments. Since revision 1.7, *PAT Upgrader* can also download or upload test database from and to the tester.

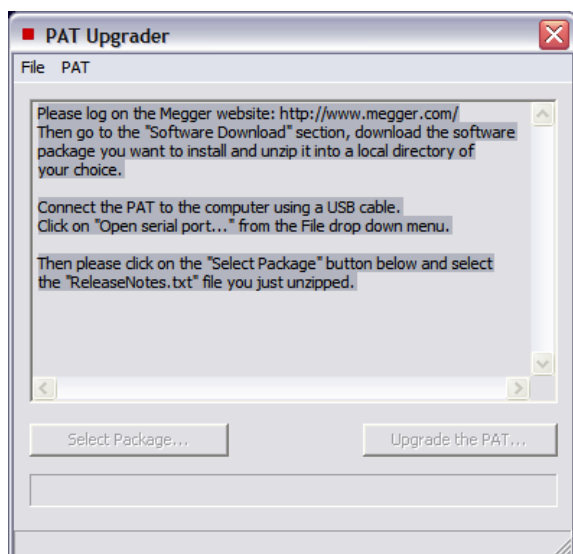
## PAT USB Driver

For *PAT Upgrader* to communicate with the PAT tester, the PAT USB Driver must first be installed on the computer. Follow instructions in the *PAT USB Driver Installation.pdf* manual to install the driver.

To check the USB driver is installed properly:  
Connect a USB cable from the computer to the PAT tester.

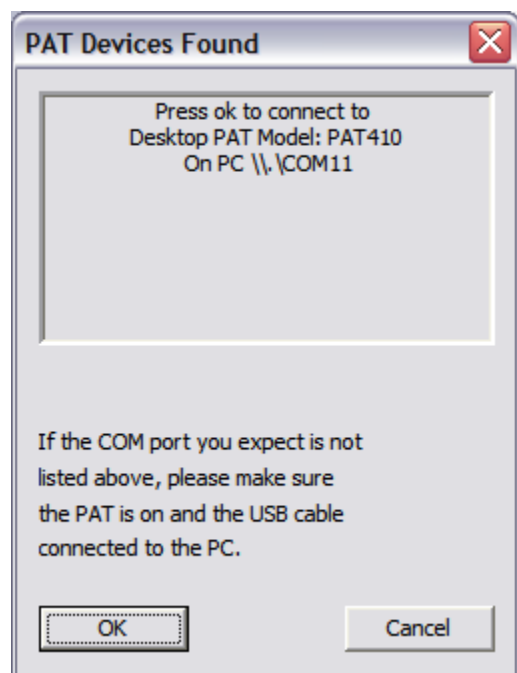


Switch on the PAT tester, allow it to boot up into the Home screen. Start *PAT Upgrader* from the PC desktop or from the start menu.

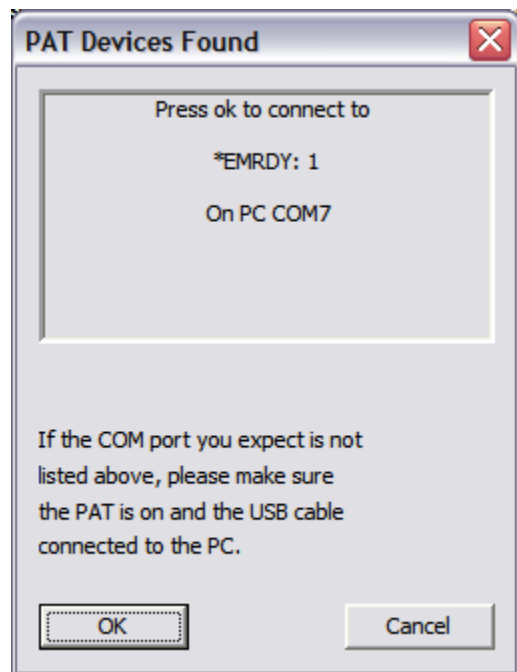


Click on Open serial port... from the File drop down menu.

The following window should appear with indication that the PAT tester is connected and communicating with the PC.



If the following window appears, click on the Cancel button and try again.



**Known issue:** *PAT Upgrader* may fail to establish connection to the PAT tests on computers that have Bluetooth devices. Try switching off Bluetooth if you see this problem.

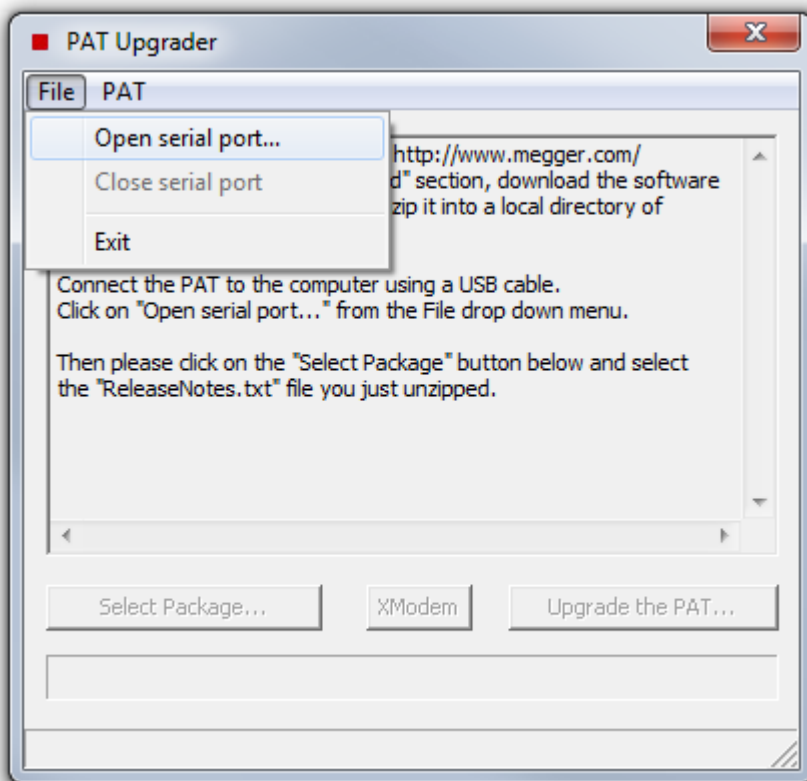
## Installing PAT Upgrader

There is no automatic installation procedure to follow. Copy *PAT Upgrader.exe* to the computer hard disk. Double click on the file to begin using the application.

## To Perform software Upgrade

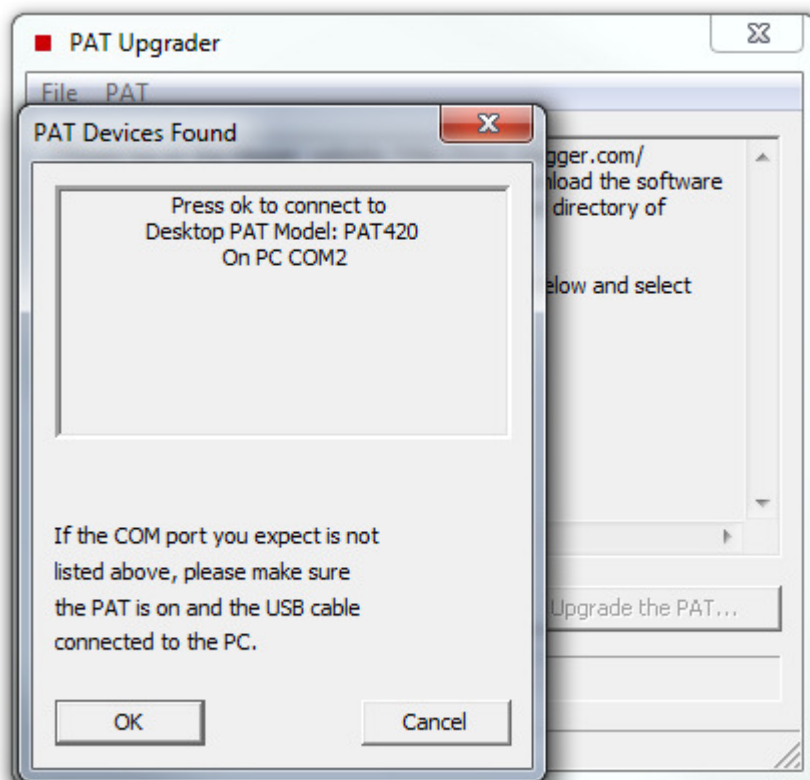
Power up the PAT and connect the PC to the PAT's USB device port. Double click on *PAT Upgrader* icon on the computer desktop to start the *PAT Upgrader* application.

**Note:** To upgrade a PAT300 series tester, press the  key.



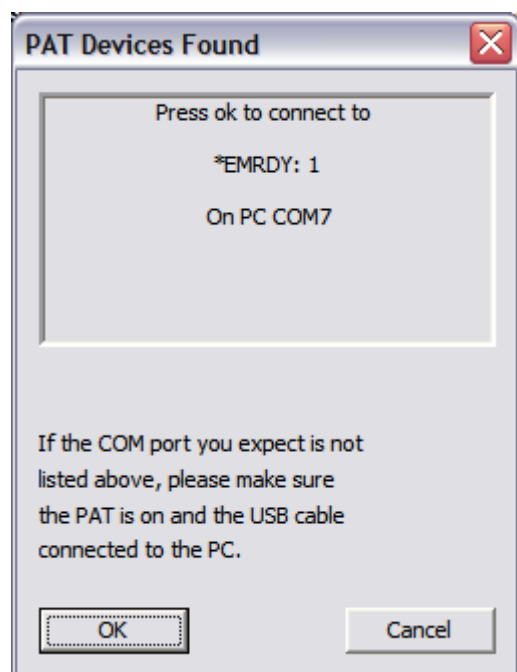
Click on *File* and then *Open serial port...*

The *PAT Device Found* window should appear with indication that the PAT tester is connected and communicating with the PC.



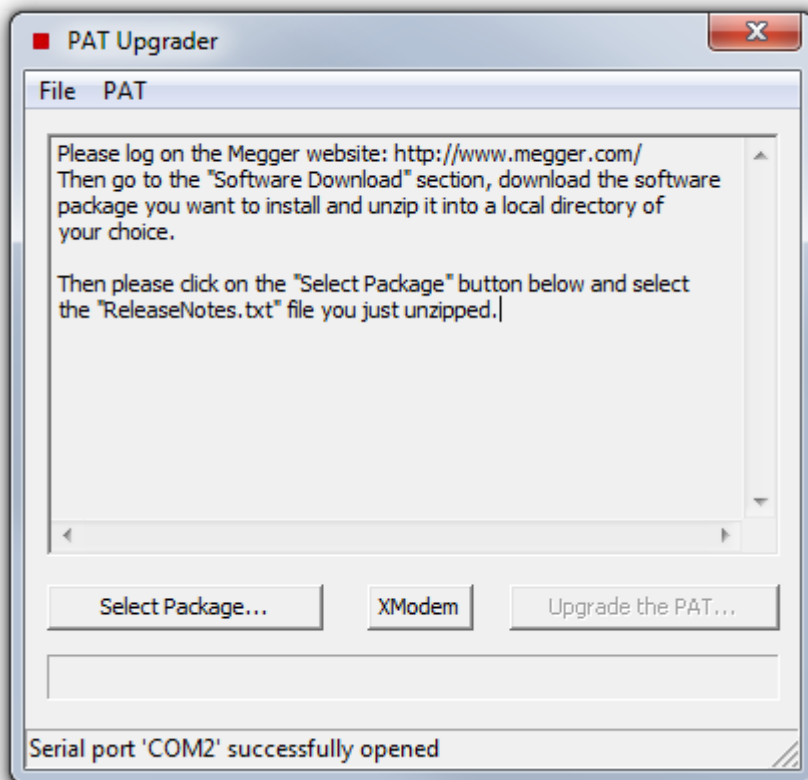
Click the *OK* button to continue.

If the following window appears, click on the *Cancel* button and try again.

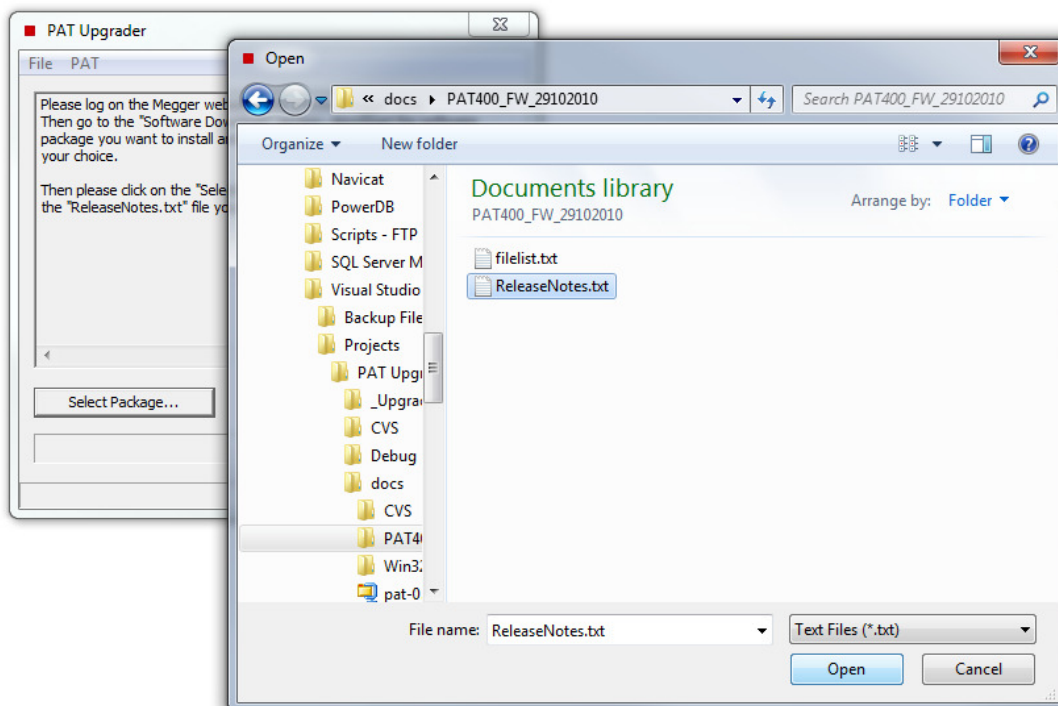


**Known issue:** *PAT Upgrader* may fail to establish connection to the PAT tests on computers that have Bluetooth devices. Try switching off Bluetooth if you see this problem.

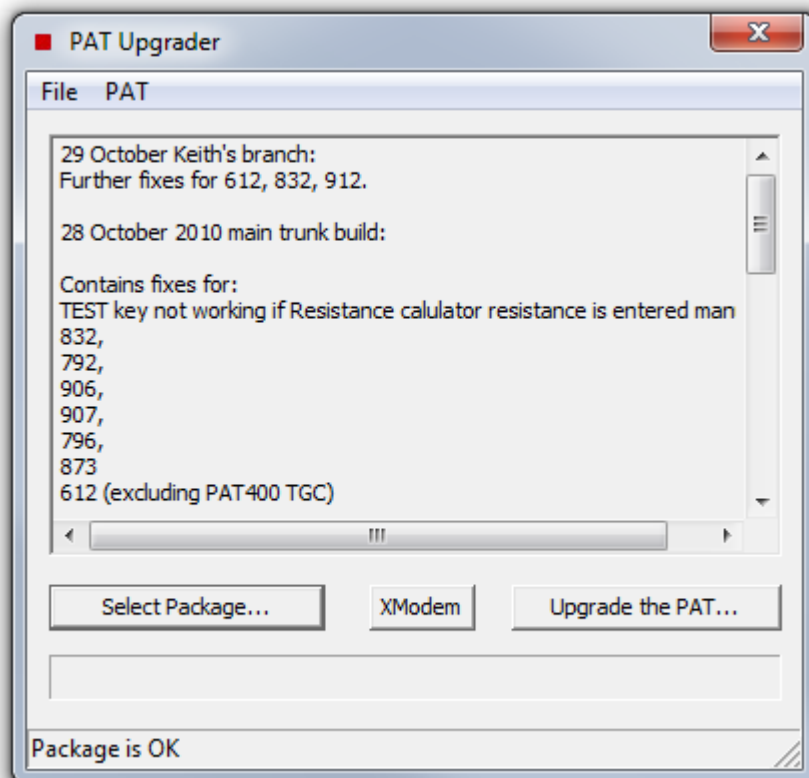
After a short duration the main window should say:



Unzip the firmware upgrade package to an empty folder in the computer.  
Click on the *Select Package...* button.

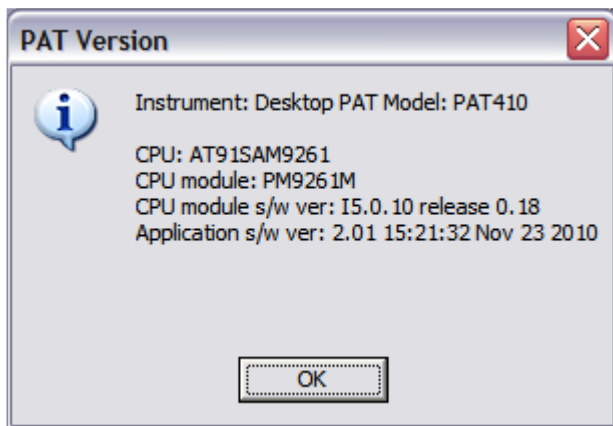


In the *Open* window navigate to the folder where the upgrade package has been unzipped to. Click on the *ReleaseNotes.txt* file followed by the *Open* button.





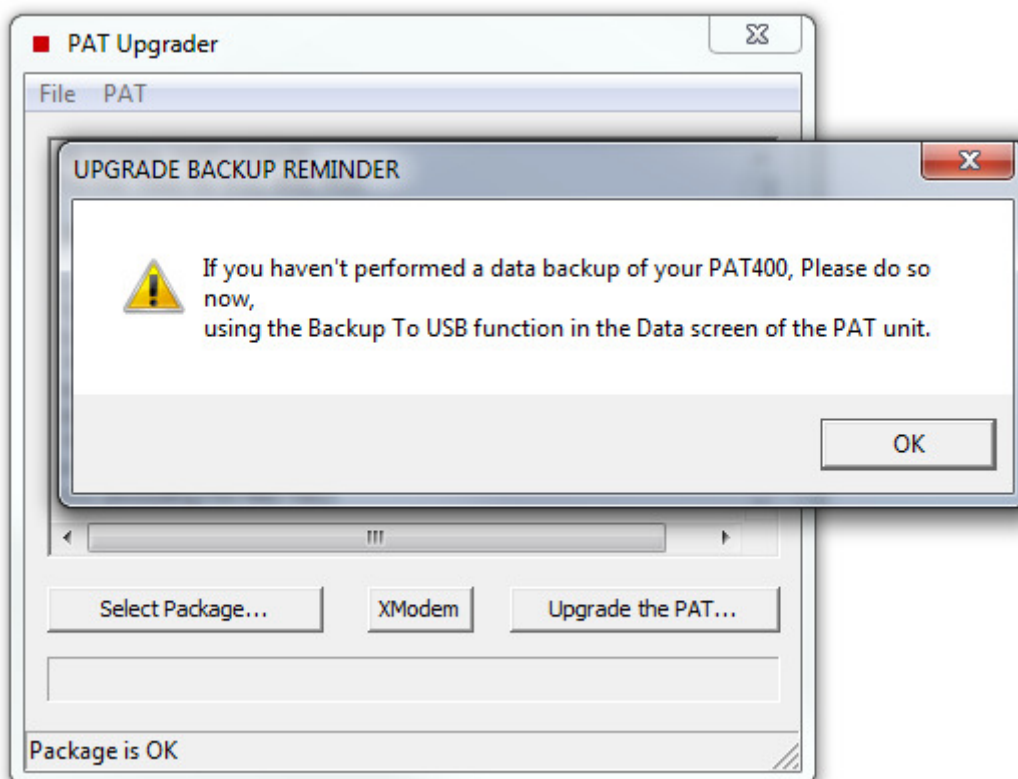
The contents of the ReleaseNotes.txt are displayed. To check the firmware revision of the PAT click on *Get PAT version* from the *PAT* drop down menu.



The last line in the popup window shows the current version of firmware installed in the machine. Click on the *OK* button to close the popup window.

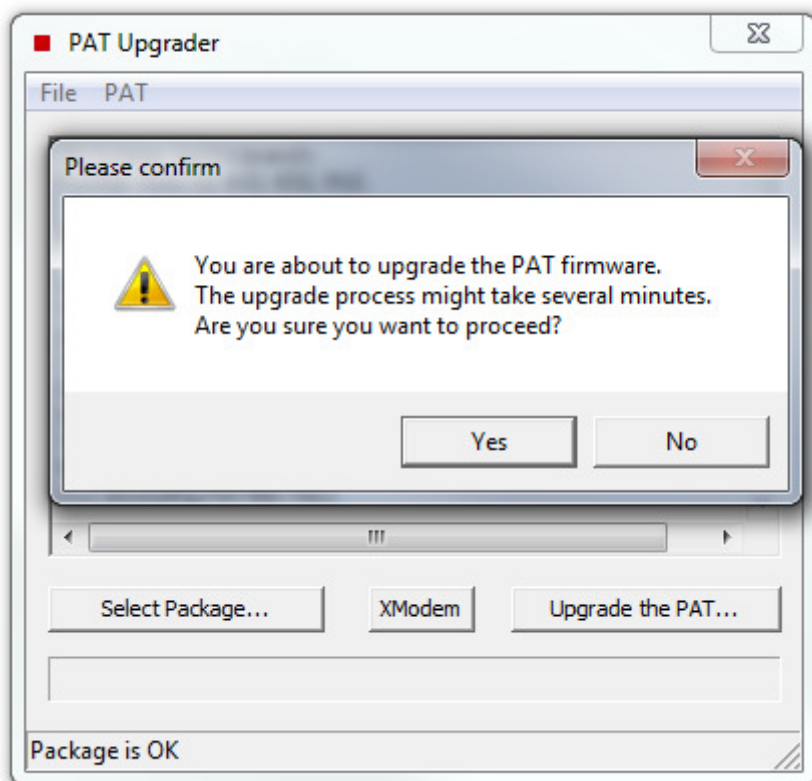
Click on the *Upgrade the PAT...* button to begin the upgrade process.

The *UPGRADE BACKUP REMINDER* popup window recommends to the user to perform a backup of the PAT stored data onto a USB memory device to safeguard data in the unlikely event that the upgrade procedure corrupts the store data.

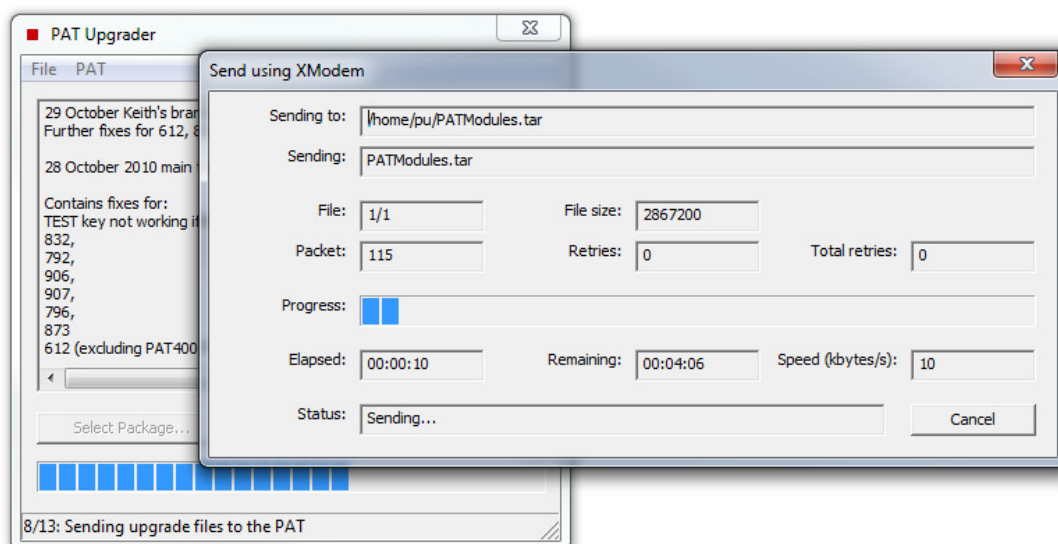


Follow the PAT user guide to perform data backup.

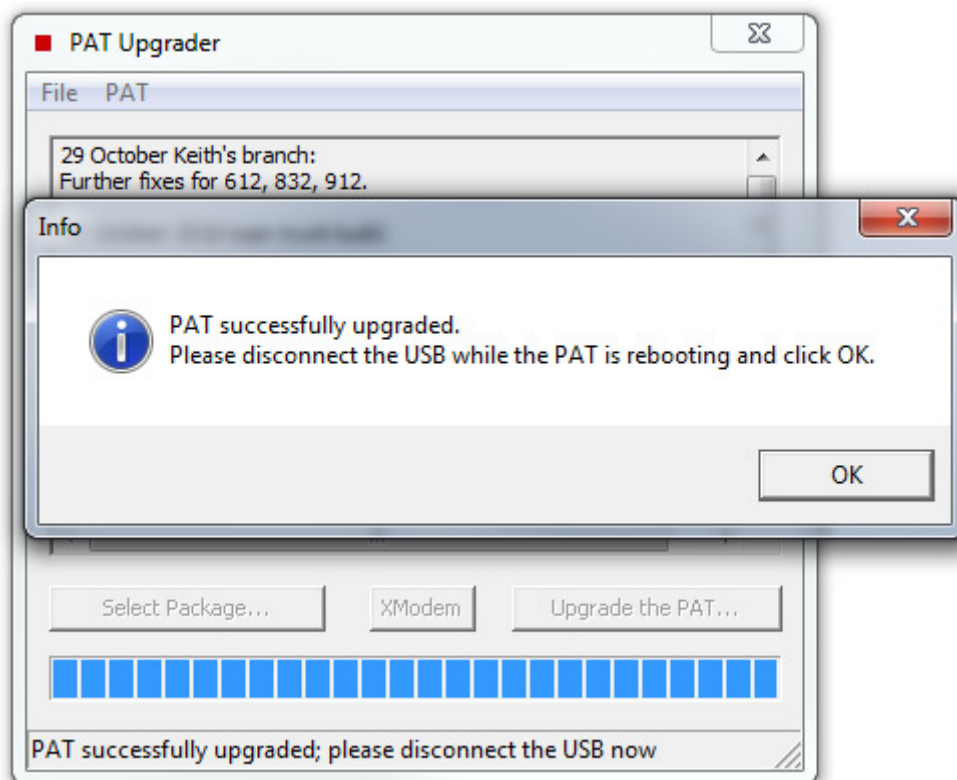
Only click on the *OK* button when the user is ready to move to the next step.



Click on the *Yes* button to begin.




At the end of the upgrade the PAT will automatically reboot.



Click *OK* to close the popup window.

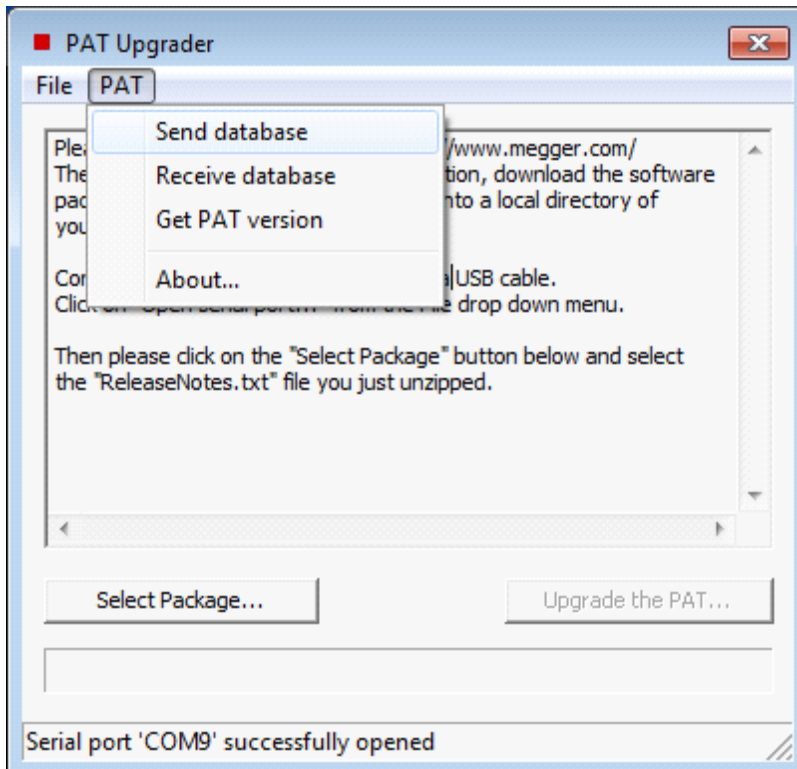
Terminate the *PAT Upgrader* application by clicking on *Exit* from the *File* drop down menu.

Disconnect the USB cable and begin to use the PAT.

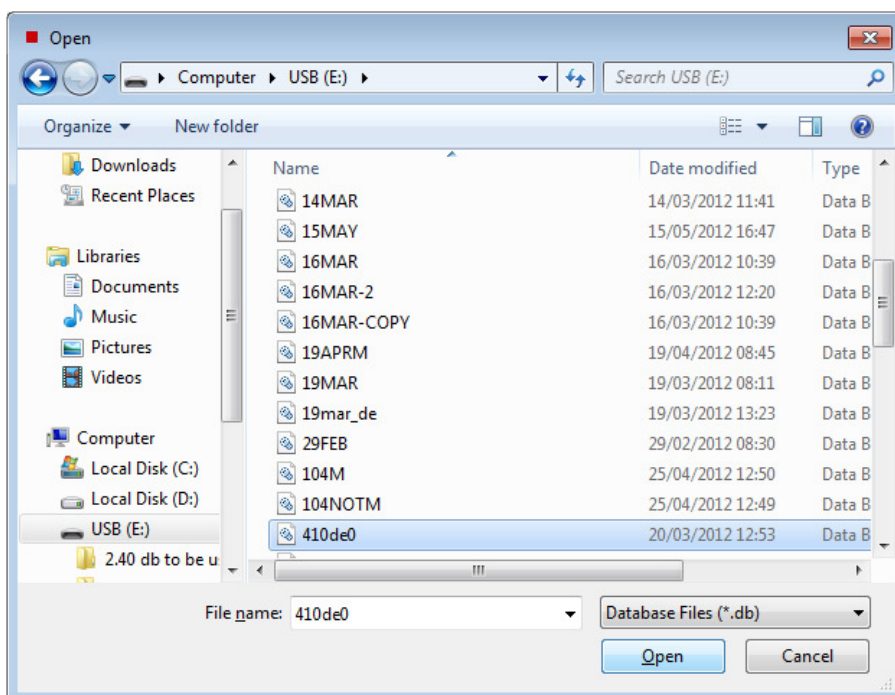
**Note:** To complete the upgrade for PAT300 series tester, remove power from the tester and re-apply power. If you have not pressed the  button prior to performing the upgrade, the tester will not power down properly. To allow the tester to power cycle properly, first remove supply power then remove the battery from the battery compartment. Fit the battery back into the battery compartment and re-apply power.

## Download Test Database

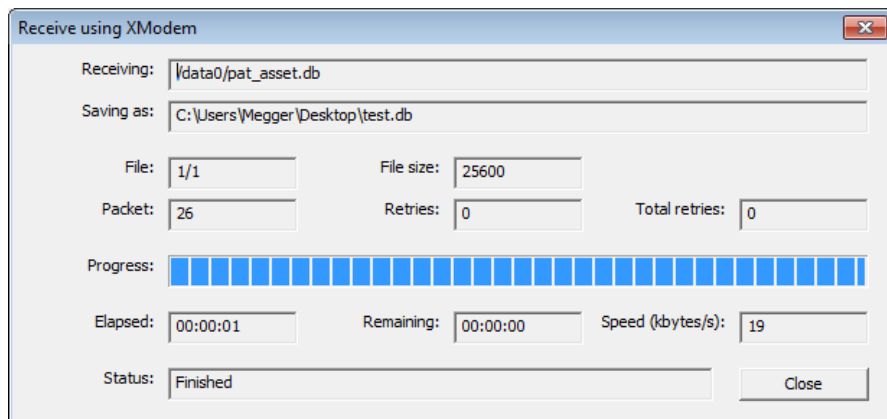
To download the test record database from the PAT directly onto the computer, open the *PAT* menu.



Click on the *Receive database* menu item. A popup window opens to allow user to specify where to save the downloaded database and what name to give to the file.



Navigate to the desired folder on the computer and enter the name of the file in the *File name* field. Click on *Open* to proceed.



The screenshot shows a Windows-style dialog box titled "Receive using XModem". It contains the following fields and controls:

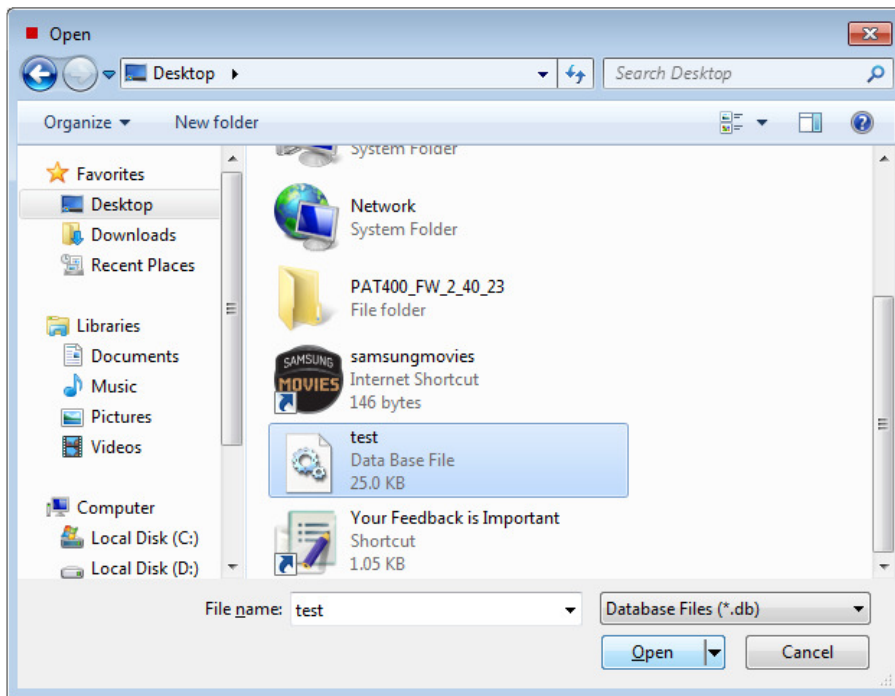
- Receiving:** A text field containing the path `\\data0\pat_asset.db`.
- Saving as:** A text field containing the path `C:\Users\Megger\Desktop\test.db`.
- File:** A text field containing `1/1`.
- File size:** A text field containing `25600`.
- Packet:** A text field containing `26`.
- Retries:** A text field containing `0`.
- Total retries:** A text field containing `0`.
- Progress:** A horizontal progress bar consisting of 20 blue segments, all of which are filled, indicating 100% completion.
- Elapsed:** A text field containing `00:00:01`.
- Remaining:** A text field containing `00:00:00`.
- Speed (kbytes/s):** A text field containing `19`.
- Status:** A text field containing `Finished`.
- Close:** A button located to the right of the Status field.

The *Receive using XModem* popup box appears to indicate the download progress. When the *Status* field says *Finished*, click on the *Close* button to complete the download process.

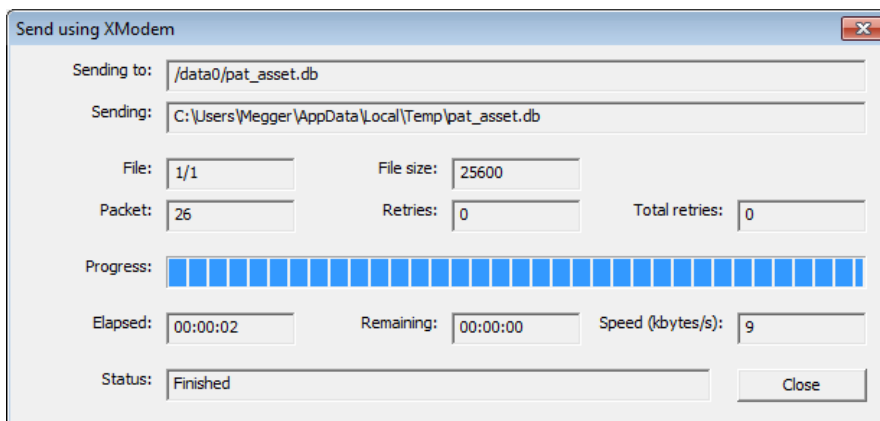
## Upload Test Database

To upload a test record database to the PAT from the computer, open the *PAT* menu. Click on the *Send database* menu item.


A popup window appears to allow user to choose the database file to upload. Navigate to the desired folder on the computer and click on the file to be uploaded.



Click on the Open button, the *Send using XModem* popup box appears to show the upload progress.



When the *Status* field says *Finished*, click on the *Close* button.

A *Reboot PAT* popup box appears to inform user to reboot the PAT to allow the new test database to take effect. Click *OK* to close the popup box. Complete the upload process by pressing the  key on the PAT and power cycle the instrument.

## Revision History

Revision	Date	Description	Author
1.7	14/06/2012	Added Disclaimer section. Added Introduction section. Added PAT USB Driver section. Added Installing PAT Upgrader section. Added Download/Upload Test Database sections.	FC