

# GISmonitor



On-line partial discharge monitoring for GIS systems

LANGUAGE | EN

USER GUIDE

## NOTICE OF COPYRIGHT & PROPRIETARY RIGHTS

© Copyright 2023 by Power Diagnostix Instruments GmbH. All rights reserved.

The contents of this manual are the property of Power Diagnostix Instruments GmbH. No part of this work may be reproduced or transmitted in any form or by any means without the written permission of the publisher. Product and company names herein may be the trademarks of their respective owners.

Power Diagnostix reserves the right to alter the specification of its products from time to time without notice. Although every effort is made to ensure the completeness and accuracy of the information contained within this document, it is not warranted or represented by Power Diagnostix to be a complete and up-to-date description.

This manual supersedes all previous issues of this manual. Please ensure that you are using the most recent issue of this document.

# GISmonitor

On-line partial discharge monitoring  
for GIS systems

LANGUAGE | EN

USER GUIDE

# Contents

|            |  |           |
|------------|--|-----------|
| <b>1</b>   | <b>General</b> .....   | <b>5</b>  |
| 1.1        | About this manual.....   | 5         |
| 1.2        | Instrument safety .....  | 5         |
| <b>2</b>   | <b>Introduction</b> .....  | <b>6</b>  |
| 2.1        | Overview .....   | 6         |
| 2.2        | Signal flow .....  | 8         |
| <b>3</b>   | <b>Hardware</b> .....  | <b>11</b> |
| <b>3.1</b> | <b>Partial discharge monitoring acquisition rack (PDMAR)</b> .....     | <b>11</b> |
| 3.1.1      | Disturbance combiner unit (DCU4) .....                                 | 13        |
| 3.1.2      | Sync switching box (SSB2) .....  | 13        |
| 3.1.3      | ioLogic .....  | 14        |
| 3.1.4      | Switch .....   | 14        |
| 3.1.5      | Monitoring unit (GIS <i>monitor</i> ).....                             | 15        |
| <b>3.2</b> | <b>Partial discharge monitoring control rack (PDMCR)</b> .....         | <b>16</b> |
| 3.2.1      | Industrial PC (IPC) .....  | 17        |
| 3.2.2      | Uninterruptible power supply (UPS) .....                               | 17        |
| <b>4</b>   | <b>Maintenance</b> .....   | <b>18</b> |
| 4.1        | Hardware maintenance .....   | 18        |
| 4.2        | PDM control rack.....  | 18        |
| 4.3        | PDM acquisition racks.....   | 18        |
| 4.4        | Software maintenance.....  | 18        |
| <b>5</b>   | <b>Declaration of Conformity</b> .....                                 | <b>19</b> |
| <b>6</b>   | <b>UK Declaration of Conformity</b> .....                              | <b>20</b> |
| <b>7</b>   | <b>Drawings</b> .....  | <b>21</b> |
| 7.1        | Partial discharge monitoring acquisition rack.....                     | 21        |
| 7.2        | Partial discharge monitoring acquisition rack IP65 .....               | 23        |
| 7.3        | Partial discharge monitoring acquisition rack IP65 sun protection..... | 25        |
| 7.4        | Partial discharge monitoring control rack .....                        | 27        |
| <b>8</b>   | <b>Certificates</b> .....  | <b>29</b> |
| <b>9</b>   | <b>Index</b> .....   | <b>31</b> |

# PD monitoring on gas-insulated switchgear

## 1 General

### 1.1 About this manual

This manual describes the hardware and usage of the GISmonitor partial discharge monitoring system (PDMS). Software updates are available on Power Diagnostix's web site ([www.pdix.com](http://www.pdix.com)). The access to the download area of that web site is password protected and requires a valid software maintenance contract. Contact Power Diagnostix for details.

### 1.2 Instrument safety

Before using the GISmonitor, read the following safety information and this manual carefully. In particular, read and follow the information, which is marked with the words 'Warning' and 'Caution'. The word 'Warning' is reserved for conditions and actions that pose hazards to the user, while the word 'Caution' is reserved for conditions and actions that may damage the instrument, or its accessories, or that may lead to malfunction.



#### Warning

- Always provide solid grounding of the instrument. Never operate the instrument without protective grounding.
- Avoid working alone.
- Do not allow the instrument to be used if it is damaged or its safety is impaired.
- Do not use the instrument in an environment that is at risk of condensation or in an environment at risk of explosion.



## PD monitoring on gas-insulated switchgear

ceives all the measured data and processes it. With this system architecture a nearly infinite number of sensors can be continuously monitored and observed. A special software reads the measured data of all stand-alone monitoring instruments (GISmonitor), each scanning up to eight sensors.

In combination with the monitoring software installed on the industrial PC (IPC), the trending data of peak values (Upp) and normalized quantities (averaged) values (Upavg) of years can be archived. Additionally, data like PD patterns, system health information, or alarm events can be stored and evaluated. If connected to the local Intranet of the substation or to the utility, it allows remote diagnosis and control of the full PD monitoring system. Different functional levels can be set for administrative, operational, or evaluation purpose. The optional IEC interface provides IEC 61850 compliant sensor data, alarms, and health information.

## PD monitoring on gas-insulated switchgear

### 2.2 Signal flow

The signal flow of a PDMS is shown in the following chart:

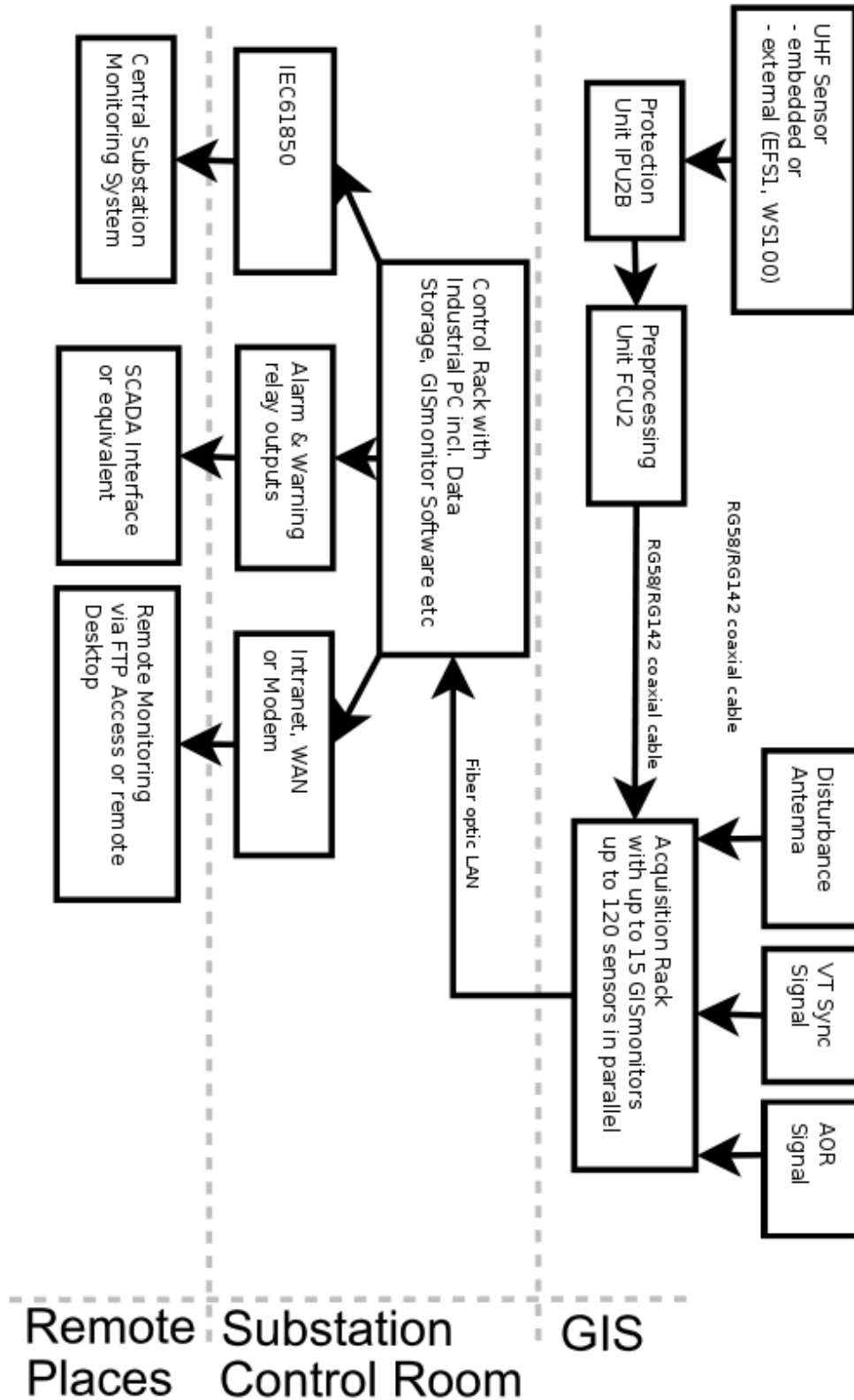


Figure 2: Signal flow



## PD monitoring on gas-insulated switchgear

The UHF signal is picked up from the sensor via an N connector. The input protection unit (IPU2) protects the measurement system from high voltages generated by switching operations, transients, or overvoltage.



Figure 3: Input protection unit IPU2B

The signal is then transformed by a frequency converter unit (FCU2) into a lower frequency range for easy submission over longer distances.



Figure 4: Frequency converter unit FCU2

The transformed signal is transmitted by use of 50 Ohm coaxial cable (RG58 for indoor use, RG142 for outdoor use) and digitised by the GISmonitor plug-in board, which offers the acquisition of up to eight sensors in parallel. A clamp-on ferrite core at each side of every cable protects the electronic circuits against transients traveling along the shielding of the cable.

### Caution!

The maximum length of cabling between FCU2 and GISmonitor plug-in board is 80 meters. Grounding loops should be minimised by using cables as short as possible and by laying them close to the common ground, e.g., along the GIS enclosures.

To provide noise suppression, the plug-in board uses a gate input. This input is connected to a disturbance combiner unit (DCU4), which mixes up to four disturbance signals. These signals are transmitted by at least one disturbance antenna (DA2), which receives disturbances created by cell phones, corona effects or similar. Additionally, an *Any Object Running* signal, provided to the first PDMAR, is used to suppress noises caused by events such as switching operations.

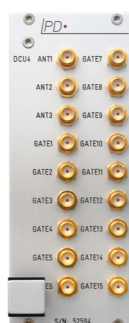


Figure 5: Disturbance combiner unit (DCU4)

## **GISmonitor**

### **PD monitoring on gas-insulated switchgear**

An external synchronisation signal is used to guarantee a phase-stable pattern at any time. To do so, the sync switching box (SSB2), selects one of up to four valid signals and transmits them to the *GISmonitor* plug-in board. In case of no synchronisation available, the system uses a line sync as a fall-back. The phase shift between the line signal and the first phase can be set up in the software.

## PD monitoring on gas-insulated switchgear

### 3 Hardware

#### 3.1 Partial discharge monitoring acquisition rack (PDMAR)

Three versions of the data acquisition rack are available: Two for indoor use, one for outdoor operation. The indoor versions differ in the number of sensors which can be captured with one rack. One version allows the connection of up to 56 sensors with seven monitoring instruments, the other version covers up to 120 sensors with up to 15 monitoring instruments in one rack. The version with 56 sensors can be extended to 120 sensors at any time in the future.

The data acquisition rack accommodates the GISmonitor 19-inch rack, the GISmonitor plug-in boards, the disturbance combiner unit (DCU4), and the sync switching box (SSB2) inside the first cabinet of a system. It comes with a 19-inch swing frame, uninterruptible power supply (UPS), network switch, overvoltage protection, ioLogic, and temperature-controlled fans. The ioLogic provides information about temperature, heating, cooling, the fibre optic ring status, fuse status, and overvoltage protection. All cables from the outside are feed through the bottom into the rack.



Figure 6: PDMAR cabinet for up to 120 sensors

## GISmonitor

### PD monitoring on gas-insulated switchgear

The outdoor version of the data acquisition rack is of ingress protection class IP65 and allows the monitoring of up to 40 sensors. The cabinet is equipped with uninterruptible power supply (UPS), network switch, over-voltage protection, a heating and cooling Peltier element, and the monitoring instruments. The cabinet can be mounted on walls or girders. In areas of high temperatures and insolation, the PDMAR IP65 can be equipped with a sun protection.

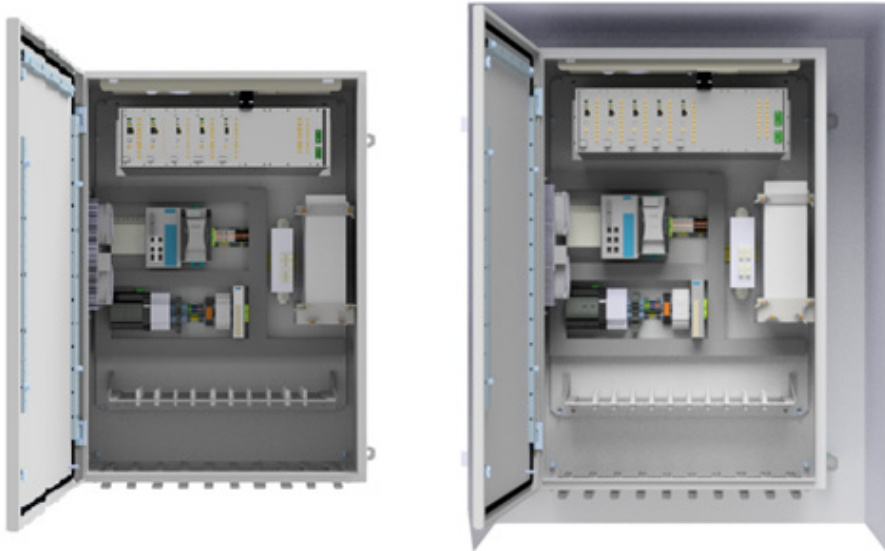


Figure 7: PDMAR IP65 cabinets with (right) and without (left) sun protection for up to 40 sensors

All outdoor racks are equipped with an ioLogic, which collects data like temperature, cooling/heating status, UPS status, fuse status, and overvoltage protection status. The information is brought together in the software, giving an overview of the system and warnings in case of action is needed.

#### Caution!

Do not attach devices with a rating of over 500 Watts to the power socket!

## PD monitoring on gas-insulated switchgear

### 3.1.1 Disturbance combiner unit (DCU4)

The DCU4 combines all signals from the antennas and distributes them to the acquisition unit. The unit is built into the GISmonitor rack.

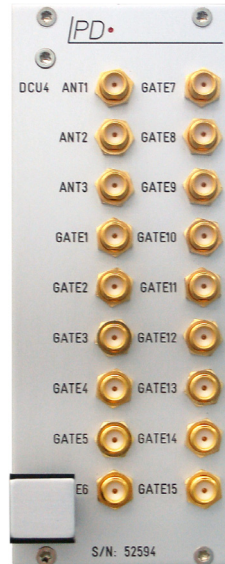


Figure 8: Disturbance combiner unit (DCU4)

### 3.1.2 Sync switching box (SSB2)

The SSB2 insures a valid synchronisation signal with the same phase to all sensors. The SSB2 is located in one PDMAR cabinet and distributes the sync signal to the other racks. The input signals are isolated from the system. This protects the PDMS against any kind of overvoltage on sync lines. The SYNC input is designed for a voltage in the range of 15 to 230 V RMS.

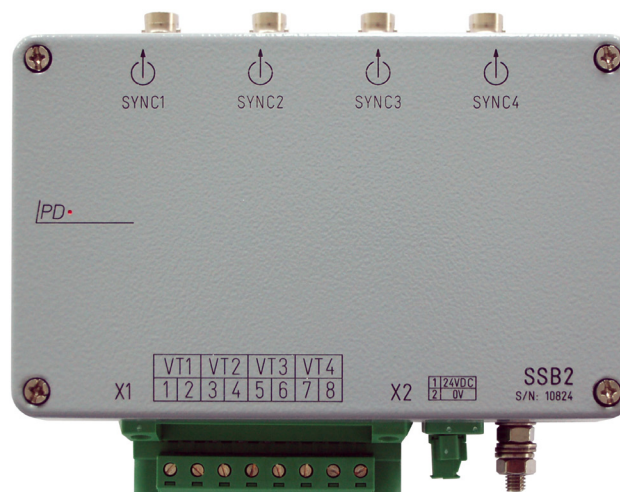


Figure 9: Sync switching box (SSB2)

## GISmonitor

# PD monitoring on gas-insulated switchgear

### 3.1.3 ioLogic

The ioLogic monitors the PDMAR's fuses, fans, cooler, and lightning protection. Additionally, the unit controls the operating temperature and the proper operation of the network ring and the power supplies of the outdoor cabinet. In case of an error or a problem the GISmonitor software will display an alert.



Figure 10: ioLogic

### 3.1.4 Switch

The industrial PC (IPC) located in the control room is linked with the GISmonitor cabinets via a fibre optic LAN ring.

This DIN rail switch is located in every cabinet and allows the recognition of a ring break. The switch located in the PDMAR cabinet is interconnected via standard LAN cables to each GISmonitor unit with eight input channels each.



Figure 11: Switch in every cabinet

## PD monitoring on gas-insulated switchgear

### 3.1.5 Monitoring unit (GISmonitor)

The GISmonitor is an instrument to continuously monitor partial discharge activity of high voltage gas insulated switchgear (GIS). Each GIS monitoring interface card is equipped with a LAN connection. The system can be adapted to use all commonly used types of couplers and sensors.



Figure 12: GISmonitor built into a 19-inch rack

One GISmonitor interface card can handle up to eight measurement points and has a GATE and SYNC input.



# PD monitoring on gas-insulated switchgear

### 3.2 Partial discharge monitoring control rack (PDMCR)

The control rack accommodates the Windows based industrial PC (IPC), a touchscreen, and a printer. It comes with a standard 19-inch metal supporter, uninterruptible power supply, network switch, and temperature-controlled fans. The built-in printer can be used to print single measurements, screenshots, or reports. The IPC is mounted on rails to ease maintenance. The cabinet provides four different alarm contacts on the DIN rail, which can be used with up to 110 V DC.



Figure 13: PDMCR cabinet



## PD monitoring on gas-insulated switchgear

### 3.2.1 Industrial PC (IPC)

The IPC comes with a RAID-1 hard disc controller to prevent unwanted loss of data. The HDD capacity allows the storage of trending and PD patterns for up to several years.

The software can be used via touchscreen or by use of the keyboard and the touchpad located in the drawer above the IPC.



Figure 14: IPC located in the PDMCR

### 3.2.2 Uninterruptible power supply (UPS)

The uninterruptible power supply (UPS) provides emergency power to the prime components of each rack. This assures instantaneous protection from input power interruptions and thereby prevents unwanted loss of data.

## 4 Maintenance

Malfunctions of parts of the system or individual instruments will be detected automatically and indicated by the software. Interruptions in communication or missing data will cause an entry in the event list. This list is available with the software and should be checked by the operator from time to time. Firmware or software updates can be requested from Power Diagnostix.

The following actions are recommended:

### 4.1 Hardware maintenance

#### 4.2 PDM control rack

- Check the UPS battery regularly and change every two years.  
**Warning!** Please refer to the manual of the UPS for further safety instructions!
- Check the operation of all fans and coolers regularly.
- Check the overvoltage protection regularly.

#### 4.3 PDM acquisition racks

- Check the UPS battery regularly and change every two years.  
**Warning!** Please refer to the manual of the UPS for further safety instructions!
- Check the operation of all fans and coolers regularly.

#### 4.4 Software maintenance

- Windows updates are recommended to prevent unwanted failures of the operating system.
- Update your antivirus programs regularly.
- Check raid state regularly.
- Updates of the GISmonitor software should be made if necessary.

## 5 Declaration of Conformity

*The manufacturer*

Power Diagnostix Instruments GmbH  
Vaalser Strasse 250  
52074 Aachen  
Germany



declares that the product

**GISmonitor PDMCR, GISmonitor PDMAR**

**Partial discharge monitoring control rack, partial discharge monitoring acquisition rack**

provided it is installed, maintained, and used for which it was made, in accordance with relevant installation standards and manufacturer's instruction, meets the requirements of the following directive(s):

**Low Voltage Directive 2014/35/EU**

**EMC Directive 2004/108/EG**

**RoHS Directive 2011/65/EU**

It complies with the following standards and/or normative documents:

**EN 61010-1:2020**

**EN 61326-1:2013**

**EN IEC 63000:2018**

---

Aachen, 15/11/2023

Dr. Mihai Huzmezan

(CEO, Power Diagnostix Instruments GmbH)

Note: Since the measurement of partial discharge pulses is done in frequency bands partly occupied by radio transmission, and since further test leads may act as antennas, disturbance free measurements may require well-shielded environments and/or additional filter techniques.

## **6 UK Declaration of Conformity**

*The manufacturer*

Power Diagnostix Instruments GmbH  
Vaalser Strasse 250  
52074 Aachen  
Germany



declares that the product

**GISmonitor PDMCR, GISmonitor PDMAR**

**Partial discharge monitoring control rack, partial discharge monitoring acquisition rack**

provided it is installed, maintained, and used for which it was made, in accordance with relevant installation standards and manufacturer's instruction, meets the requirements of the following Statutory Instruments:

**SI 2016 no. 1101 The Electrical Equipment (Safety) Regulations 2016**

**SI 2016 no. 1091 The Electromagnetic Compatibility Regulations 2016**

**SI 2012 no. 3032 The Restriction of the Use of Certain Hazardous Substances in Electrical and Electronic Equipment Regulations 2012**

It complies with the following standards and/or normative documents:

**EN 61010-1:2020**

**EN 61326-1:2013**

**EN IEC 63000:2018**

---

Aachen, 15/11/2023

Dr. Mihai Huzmezan

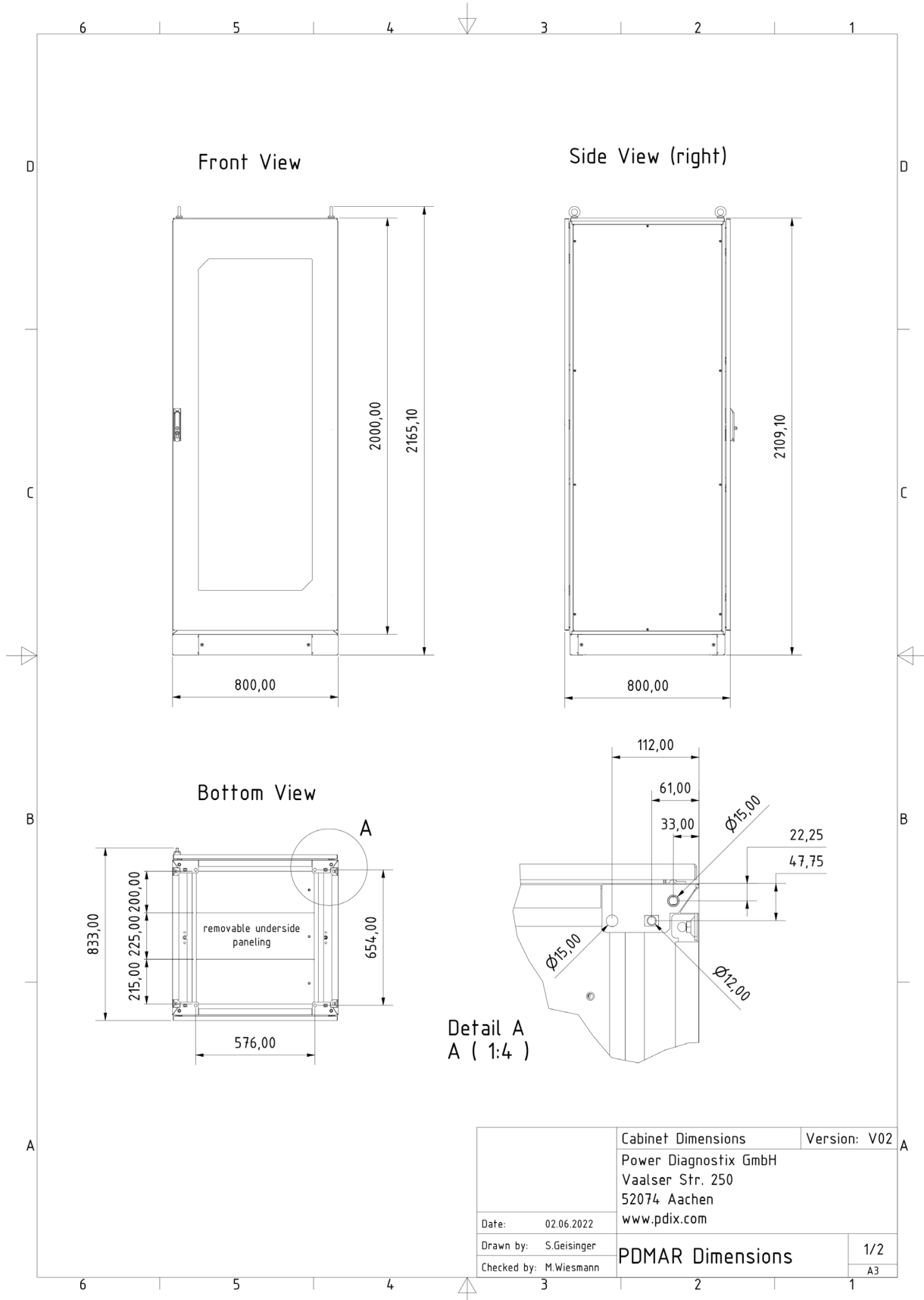
(CEO, Power Diagnostix Instruments GmbH)

Note: Since the measurement of partial discharge pulses is done in frequency bands partly occupied by radio transmission, and since further test leads may act as antennas, disturbance free measurements may require well-shielded environments and/or additional filter techniques.

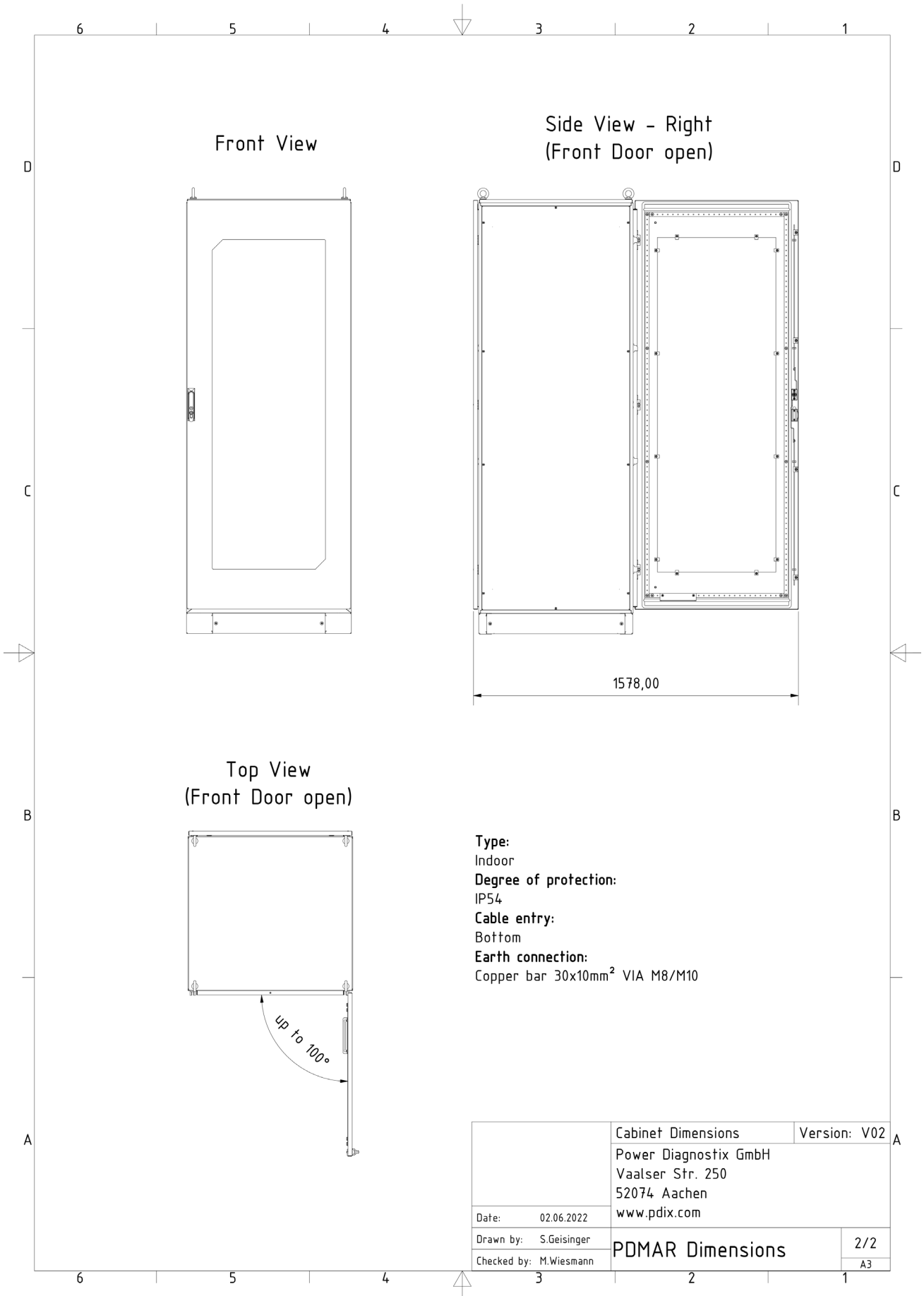
# PD monitoring on gas-insulated switchgear

## 7 Drawings

### 7.1 Partial discharge monitoring acquisition rack

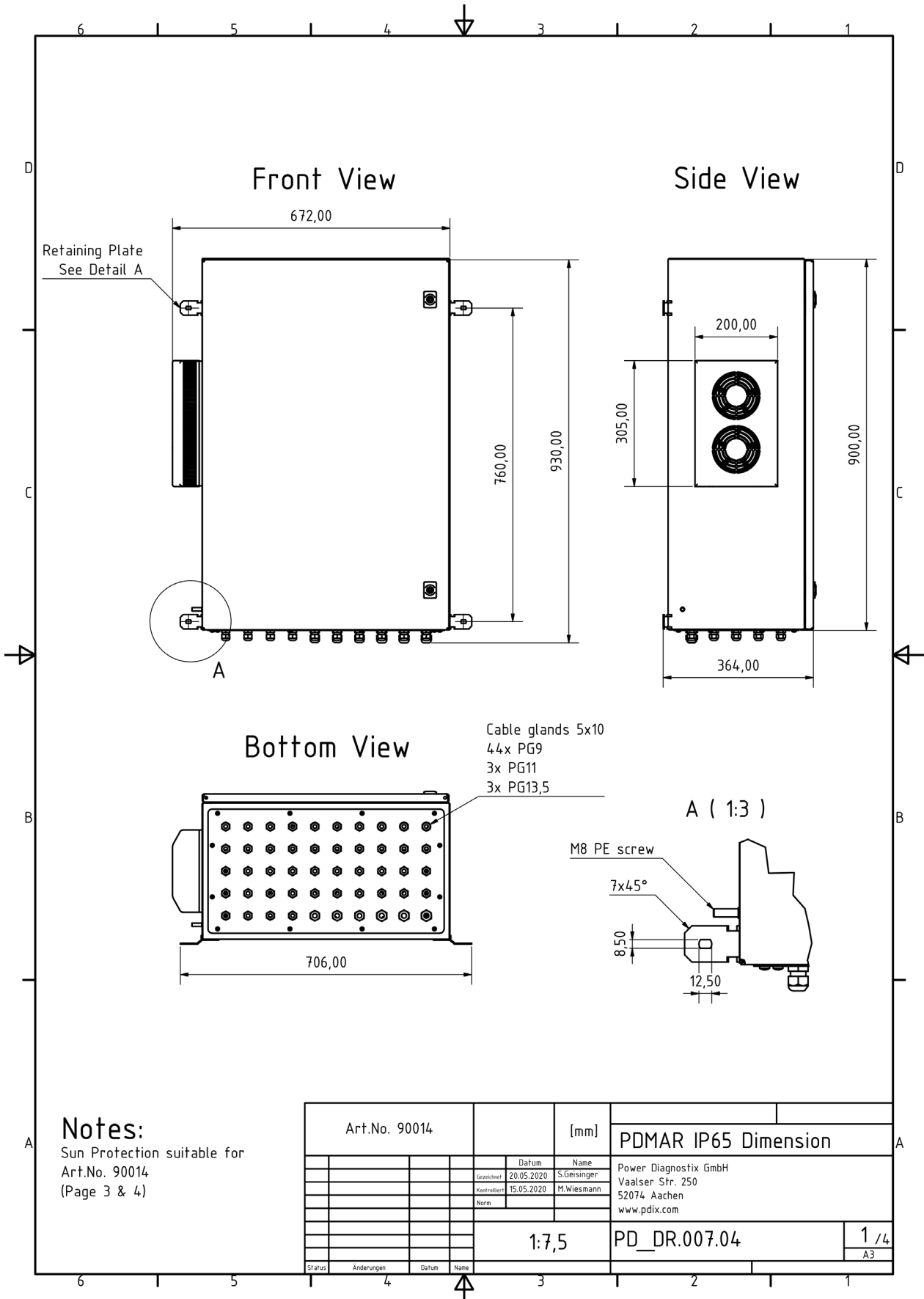


**PD monitoring on gas-insulated switchgear**

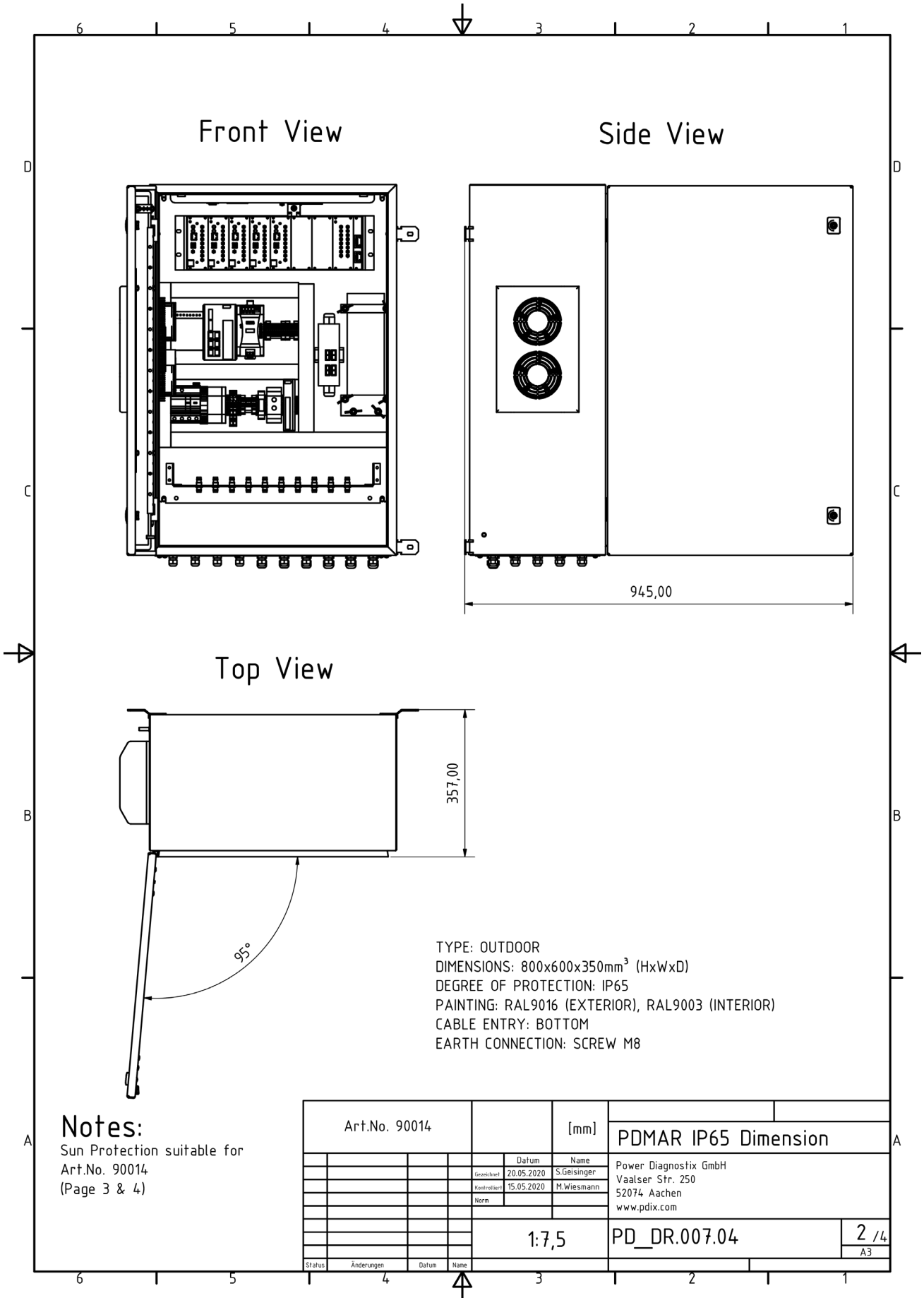


PD monitoring on gas-insulated switchgear

7.2 Partial discharge monitoring acquisition rack IP65



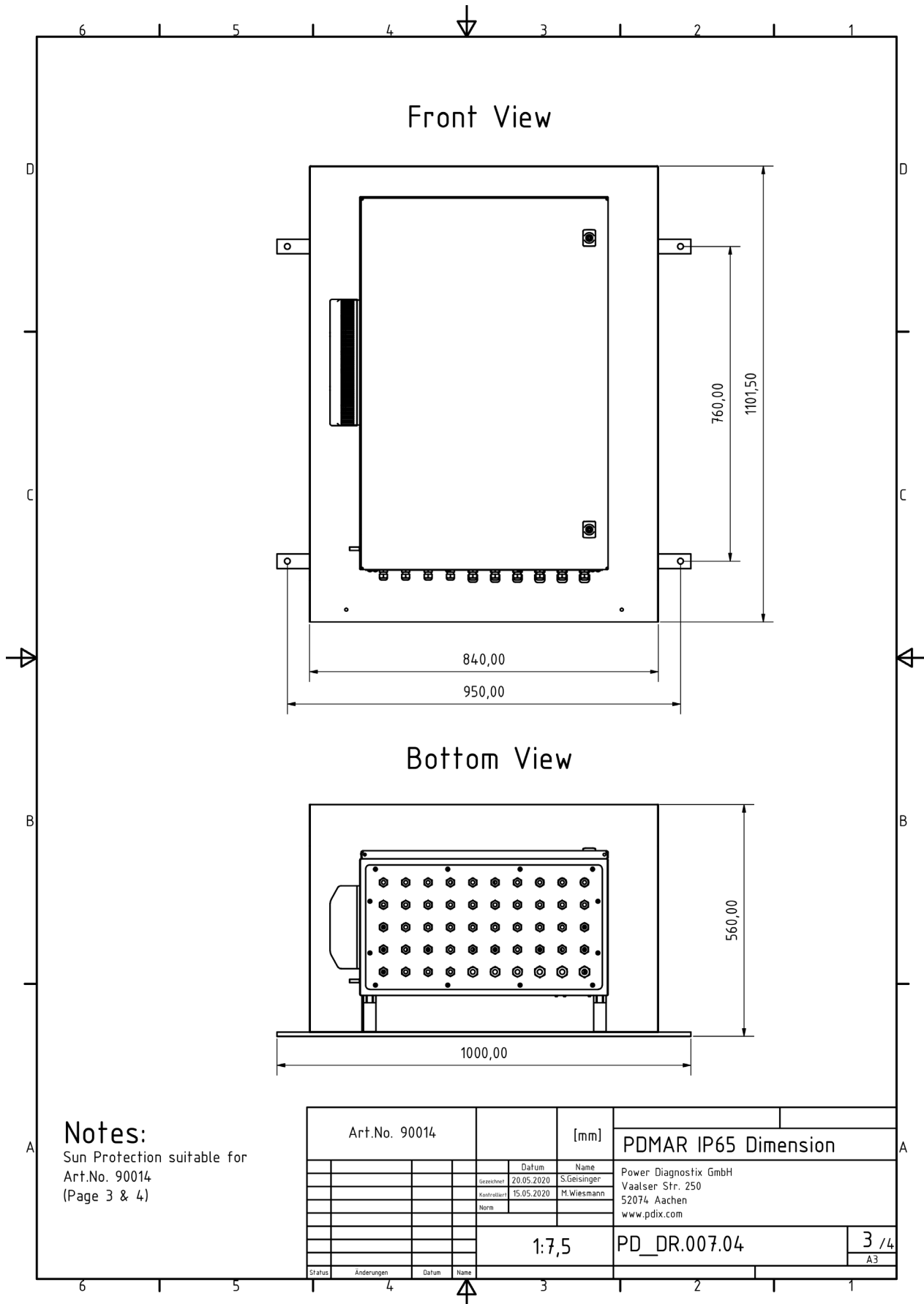
## PD monitoring on gas-insulated switchgear



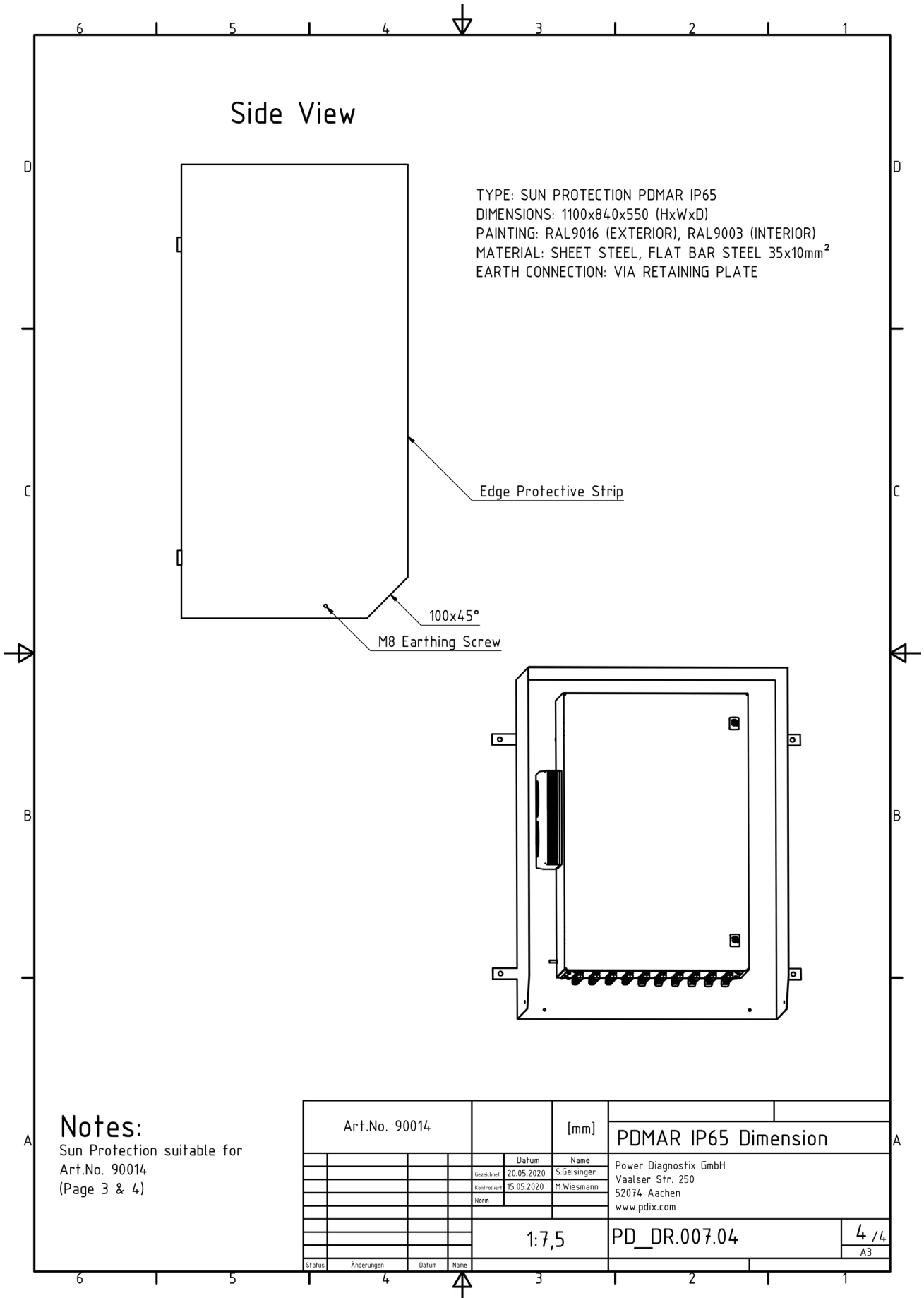


PD monitoring on gas-insulated switchgear

7.3 Partial discharge monitoring acquisition rack IP65 sun protection

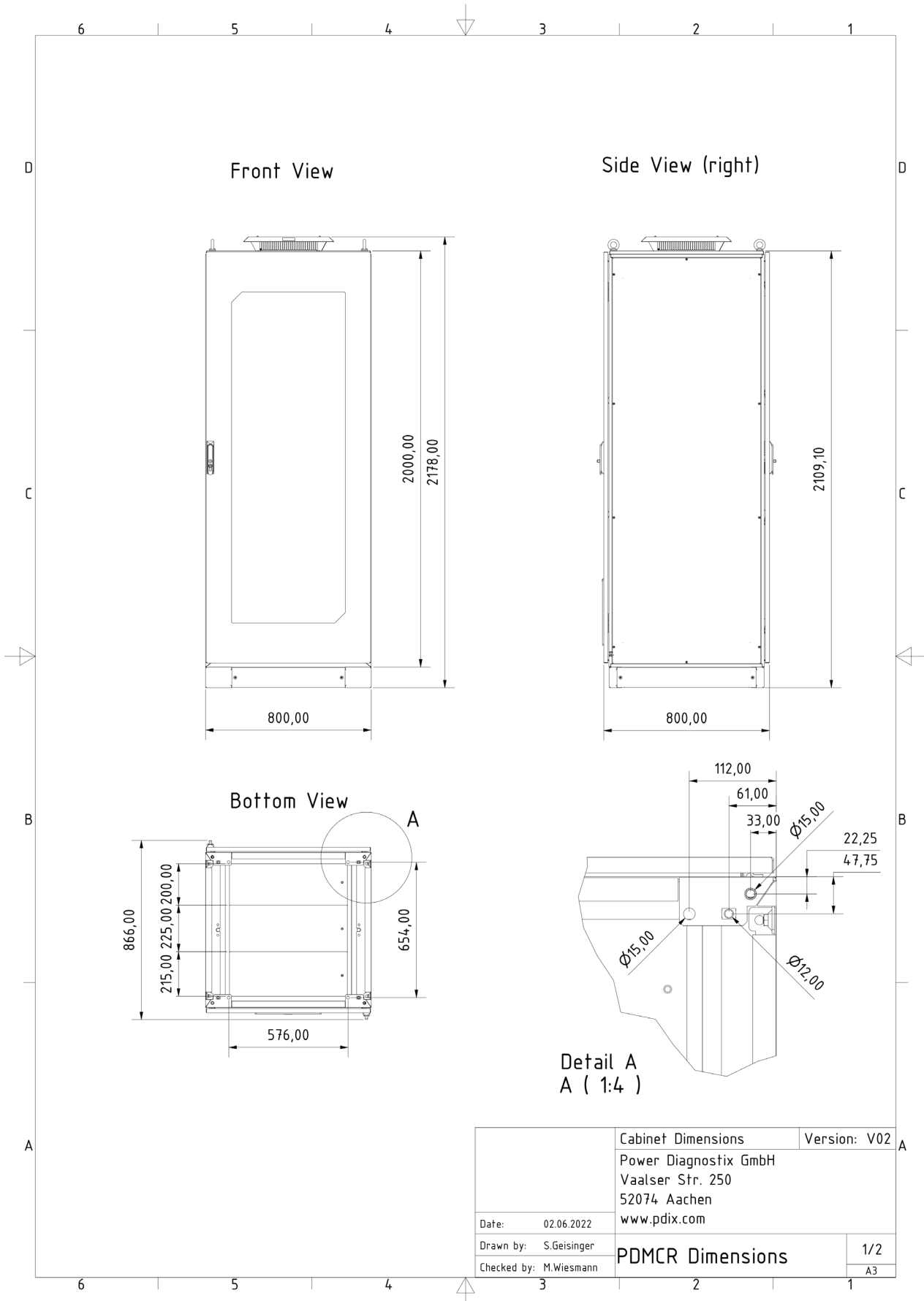


**PD monitoring on gas-insulated switchgear**

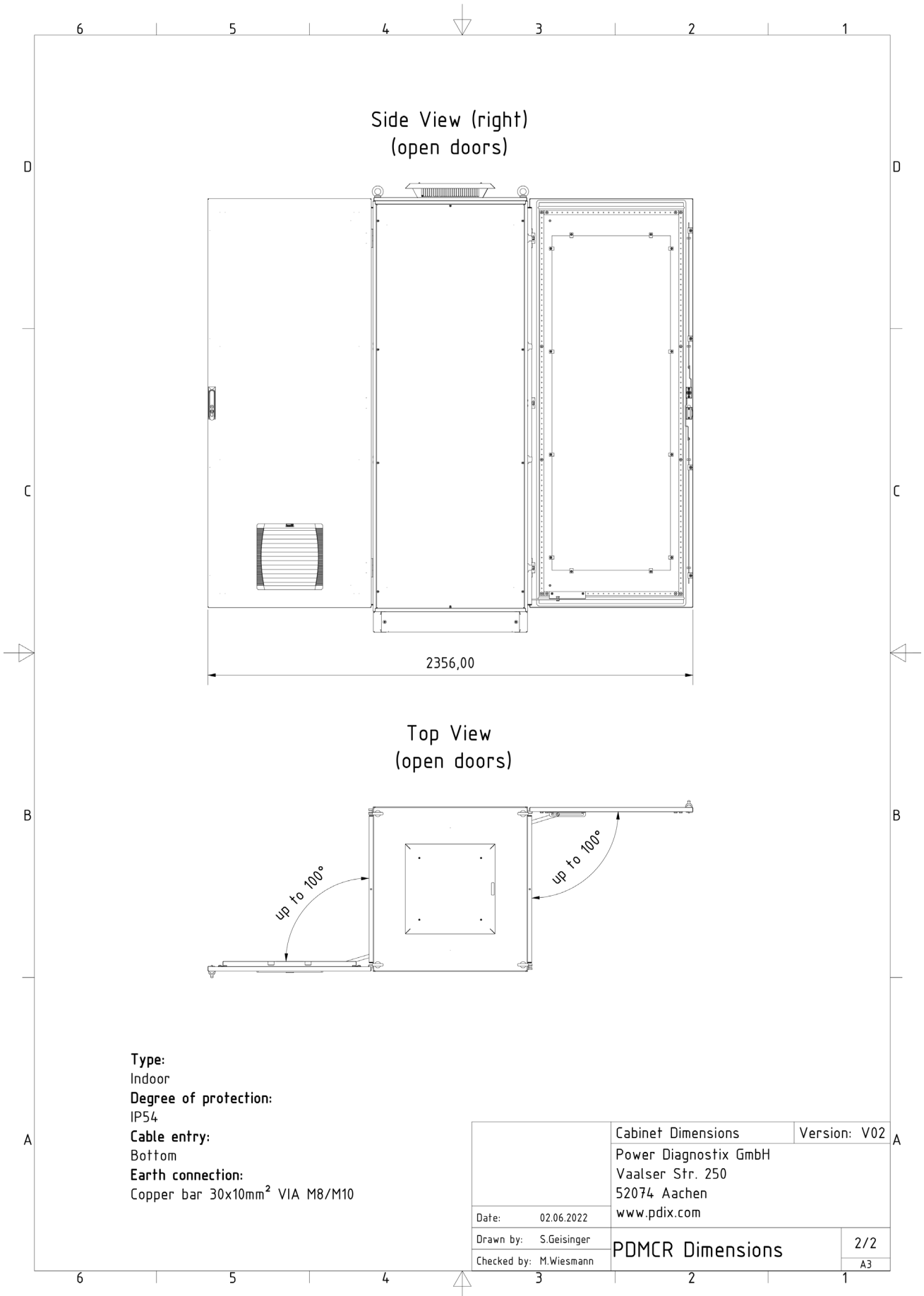


# PD monitoring on gas-insulated switchgear

## 7.4 Partial discharge monitoring control rack



**PD monitoring on gas-insulated switchgear**



## 8 Certificates

# Certificate

Standard **ISO 9001:2015**

Certificate Registr. No. **01 100 1900587**

Certificate Holder: **Megger Diagnostic Holding GmbH**  
 Dr.-Herbert-lann-Str. 6  
 96148 Baunach  
 Germany


including the locations according to annex

Scope: Design, development, production, testing, and sales of measurement and monitoring equipment for electrical power engineering and related services in this field

Proof has been furnished by means of an audit that the requirements of ISO 9001:2015 are met.

Validity: The certificate is valid from 2022-10-14 until 2025-09-09.  
 First certification 2019

2022-10-14

  
 TÜVRheinland Cert GmbH  
 Am Grauen Stein · 51105 Köln

# Annex to certificate

Standard **ISO 9001:2015**

Certificate Registr. No. **01 100 1900587**

| No. | Location  | Scope   |
|-----|---|---|
| /01 | c/o Megger Diagnostic Holding GmbH<br>Dr.-Herbert-lann-Str. 6<br>96148 Baunach<br>Germany | Design, development, production, testing, and sales of measurement and monitoring equipment for electrical power engineering and related services in this field |
| /02 | c/o Power Diagnostix Systems GmbH<br>Vaalser Str. 250 D<br>52074 Aachen<br>Germany        | Design, development, production, testing, and sales of measurement and monitoring equipment for electrical power engineering and related services in this field |
| /03 | c/o Power Diagnostix Instruments GmbH<br>Vaalser Str. 250D<br>52074 Aachen<br>Germany     | Design, development, production, testing, and sales of measurement and monitoring equipment for electrical power engineering and related services in this field |
| /04 | c/o Power Diagnostix Service GmbH<br>Vaalser Str. 250 D<br>52074 Aachen<br>Germany        | Design, development, production, testing, and sales of measurement and monitoring equipment for electrical power engineering and related services in this field |

2022-10-14

  
TÜV Rheinland Cert GmbH  
Am Grauen Stein · 51105 Köln

© TÜV, TÜEV and TÜV are registered trademarks. Utilisation and application requires prior approval.

# PD monitoring on gas-insulated switchgear

## 9 Index

|                                |               |   |                              |
|--------------------------------|---------------|---|------------------------------|
| <b>A</b>                       |               | <b>N</b>  |                              |
| Antivirus program.....         | 18            | NQS.....  | 7                            |
| Any Object Running.....        | 9             | <b>O</b>  |                              |
| <b>C</b>                       |               | Overvoltage protection.....                       | 11, 12, 18                   |
| Caution.....                   | 5, 9, 12      | <b>P</b>  |                              |
| Clamp-on ferrite core.....     | 9             | Partial discharge monitoring acquisition rack.... | 6, 11, 21, 23, 25            |
| Coaxial cable.....             | 9             | Partial discharge monitoring control rack         | 6, 16, 19, 20, 27            |
| <b>D</b>                       |               | PDMAR.....  | 6, 9, 11, 12, 13, 14, 19, 20 |
| DA2.....                       | 9             | PDMCR.....  | 6, 16, 17, 19, 20            |
| Data acquisition rack.....     | 11, 12        | PDMS.....   | 5, 6, 8, 13                  |
| DCU4.....                      | 9, 11, 13     | <b>Q</b>  |                              |
| Declaration of Conformity..... | 19, 20        | Qp.....   | 7                            |
| Disturbance antenna.....       | 9             | <b>R</b>  |                              |
| Disturbance combiner unit..... | 9, 11, 13     | RAID-1.....                                       | 17                           |
| <b>F</b>                       |               | RG58.....   | 9                            |
| FCU2.....                      | 6, 9          | RG142.....  | 9                            |
| Fibre optic LAN ring.....      | 6, 14         | <b>S</b>  |                              |
| Frequency converter unit.....  | 6, 9          | Safety.....                                       | 5, 18                        |
| <b>G</b>                       |               | Signal flow.....                                  | 8                            |
| GATE input.....                | 15            | SSB2.....   | 10, 11, 13                   |
| GISmonitor plug-in board.....  | 9, 10, 11, 15 | Switch.....                                       | 11, 12, 14, 16               |
| <b>H</b>                       |               | Synchronisation.....                              | 10, 13                       |
| HF.....                        | 6             | SYNC input.....                                   | 13, 15                       |
| <b>I</b>                       |               | Sync switching box.....                           | 10, 11, 13                   |
| IEC 61850.....                 | 7             | <b>T</b>  |                              |
| IEC interface.....             | 7             | Temperature-controlled fan.....                   | 11, 16                       |
| Industrial PC.....             | 7, 14, 16     | <b>U</b>  |                              |
| Input protection unit.....     | 6, 9          | UHF.....  | 6, 9                         |
| ioLogic.....                   | 11, 12, 14    | Uninterruptible power supply.....                 | 11, 12, 16, 17               |
| IPC.....                       | 7, 14, 16, 17 | UPS.....  | 11, 12, 17, 18               |
| IPU2.....                      | 6, 9          | UPS battery.....                                  | 18                           |
| <b>L</b>                       |               | <b>W</b>  |                              |
| Line sync.....                 | 10            | Warning.....                                      | 5, 18                        |
| <b>M</b>                       |               |   |                              |
| Maintenance.....               | 18            |   |                              |

# GISmonitor

On-line partial discharge monitoring for GIS systems

LANGUAGE | EN

USER GUIDE

Power Diagnostix Systems GmbH · Vaalser Strasse 250 · 52074 Aachen ·  
Germany · Telephone +49 241 74927 · Fax +49 241 79521 · [www.pdix.com](http://www.pdix.com)

GISmonitor\_UG\_e1.00 November 2023

© Power Diagnostix Systems GmbH 2023